

MASONRY OPENING
BELOW, STOP END OF
CONT. BOTTOM PLATE
1/4" FROM OPENING

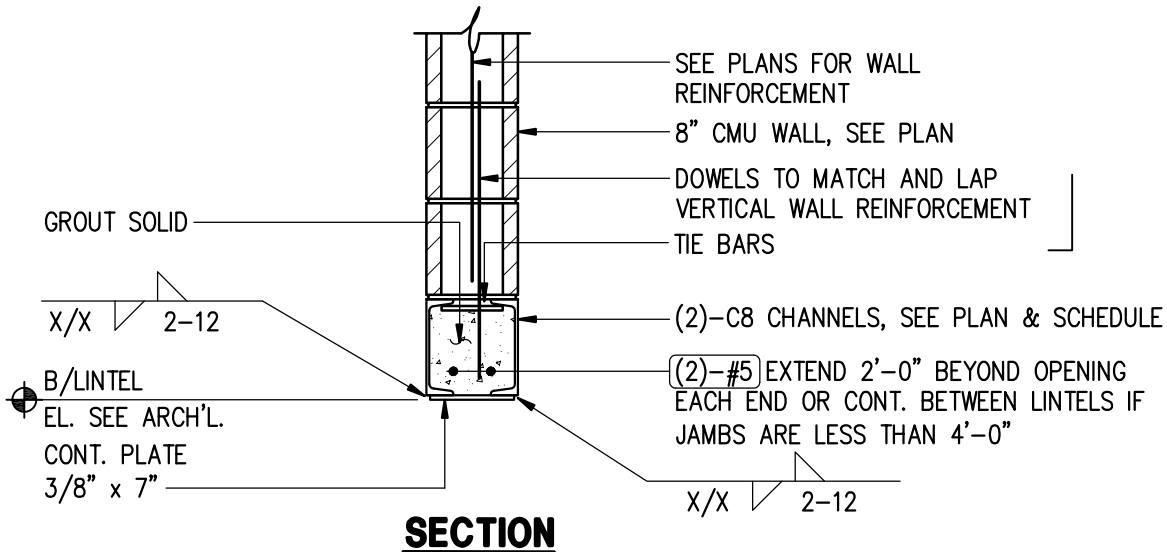
1'-4"

TIE BAR 1/4 x 2, MIN.
2 PER LINTEL OR AT
48" o.c. MAX. SHOP
WELDED TO CHANNELS

(2) - BARS AT JAMB

BAR SIZE SHALL BE THE SAME AS WALL
VERTICALS, BUT NOT LESS THAN #5. BARS
ARE CONTINUOUS PAST LINTEL IN SOLID
GROUTED CELLS FULL HEIGHT OF WALL

PLAN



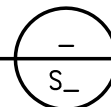
SECTION

LINTEL BEARING DETAIL

SCALE: 3/4" = 1'-0"

Disclaimer note

This detail must not be used without the final and complete review and evaluation by the design professional. The design professional assumes total and final responsibility for this detail as explained in Responsibilities and Legal Notices in the axioncpl.com website. Please remove the review text boxes and this disclaimer note after review.



SSD08.0-02
V1.1

